

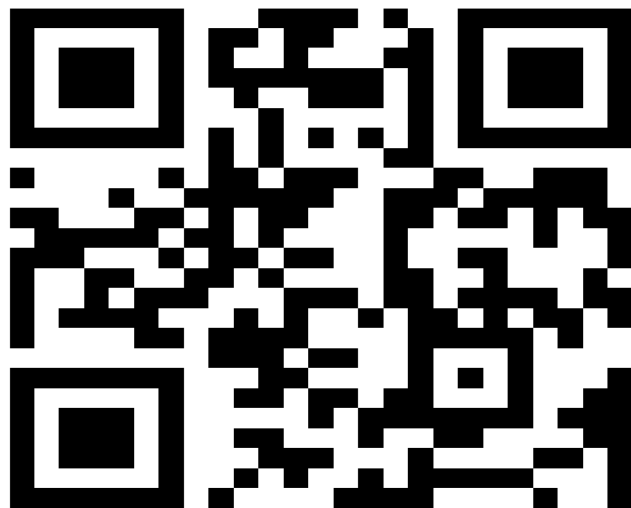
Lead Service Line Inventory Program

It has been determined that this property has the potential of containing a Lead Service Line running from the curb stop to the house.

This Flyer represents an attempt to identify the type of water service buried below the property.

WJWW is requesting your assistance in identifying the type of service line coming into your home. Please Scan the QR code below and fill out the on-line form at your earliest convenience.

SCAN ME



If you have issues with identifying the material of the water service line coming into your home, WJWW personnel can provide assistance in confirming the line material at no charge with your consent. Please contact us at: 914-698-3500 Ext. 642
servicelineinventory@wjww.com

See other side for additional information

Service Line Material: Self-Assessment

You can identify the type of material that your water service line and in-home plumbing is made from using a magnet and a penny.



Lead Pipe

- A magnet will not stick to a lead pipe.
- Scratch the pipe with a coin. If the scraped area is shiny silver and flakes off, the service line is lead.



Copper Pipe

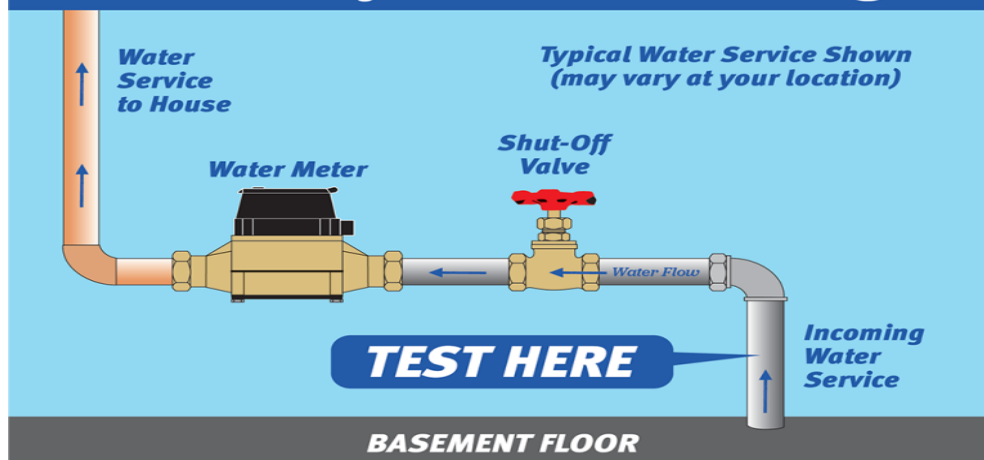
- A magnet will not stick to a copper pipe.
- Scratch the pipe with a penny. If the scraped area is copper in color, like a penny, your service line is copper.



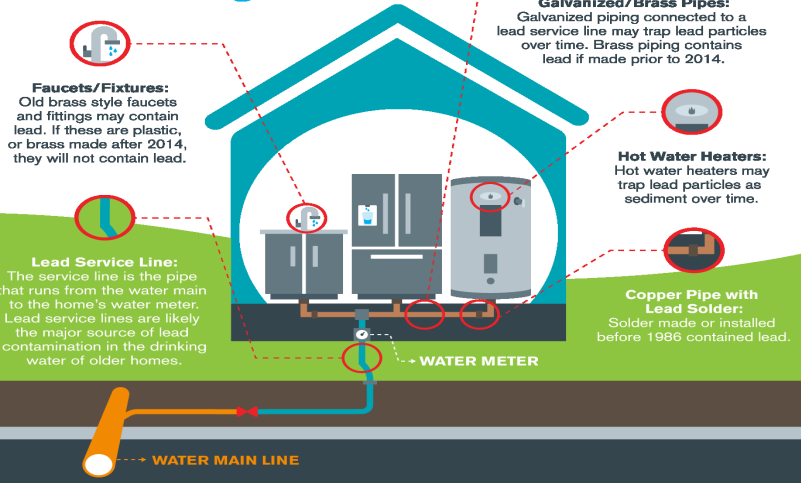
Galvanized Steel Pipe

- If a magnet sticks to the surface, your service line is galvanized steel.
- A scratch test is not needed. If you scratch the pipe, it will remain a dull gray.

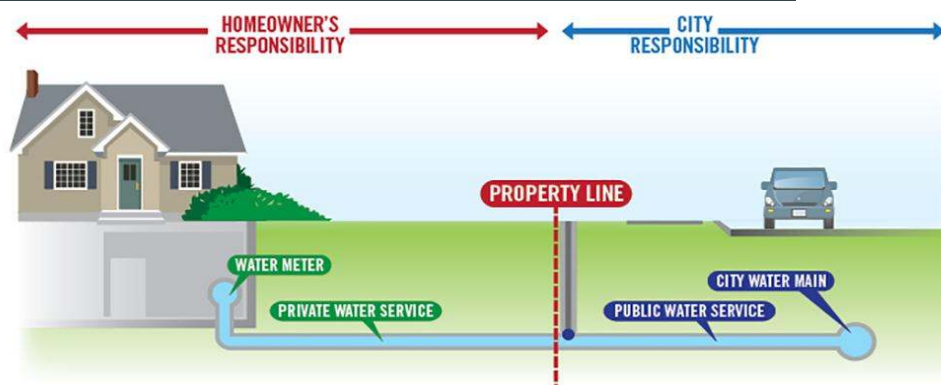
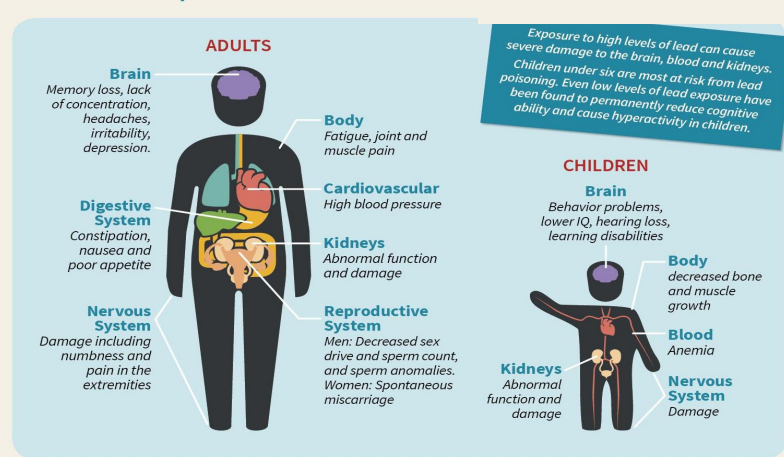
Test Area for Lead Plumbing



Sources of LEAD in Drinking Water



Health Impacts of Lead



For information from the EPA on the effects of lead in drinking water please scan this QR Code

